

5-Hydroxy-8,8-dimethyl-10-(2-methylbut-3-en-2-yl)-2*H*,6*H*-7,8-dihydro-pyrano[3,2-*g*]chromene-2,6-dione

Hoong-Kun Fun,^{a,*}‡ Tawanun Sripisut,^b Surat Laphookhieo^b and Suchada Chantrapromma^c§

^aX-ray Crystallography Unit, School of Physics, Universiti Sains Malaysia, 11800 USM, Penang, Malaysia, ^bNatural Products Research Laboratory, School of Science, Mae Fah Luang University, Tasud, Muang Chiang Rai 57100, Thailand, and ^cCrystal Materials Research Unit, Department of Chemistry, Faculty of Science, Prince of Songkla University, Hat-Yai, Songkhla 90112, Thailand

Correspondence e-mail: hkfun@usm.my

Received 1 January 2011; accepted 11 January 2011

Key indicators: single-crystal X-ray study; $T = 100$ K; mean $\sigma(\text{C}-\text{C}) = 0.002$ Å; R factor = 0.047; wR factor = 0.147; data-to-parameter ratio = 13.3.

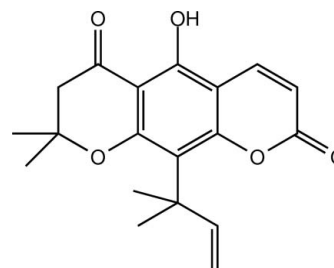
In the title compound, $\text{C}_{19}\text{H}_{20}\text{O}_5$, the pyran ring is in an envelope conformation, whereas the benzene and dihydropyran ring system is planar with an r.m.s. deviation of 0.0190 (1) Å. The hydroxy group is coplanar with the attached benzene ring [r.m.s. deviation = 0.0106 (1) Å]. An intramolecular $\text{O}-\text{H}\cdots\text{O}$ hydrogen bond generates an $S(6)$ ring motif. In the crystal, molecules are linked into chains along the b axis by weak $\text{C}-\text{H}\cdots\text{O}$ interactions. These chains are stacked along the a axis. $\text{C}-\text{H}\cdots\pi$ and weak $\pi-\pi$ interactions [centroid-centroid distance = 3.7698 (7) Å] are also observed.

Related literature

For bond-length data, see: Allen *et al.* (1987). For hydrogen-bond motifs, see: Bernstein *et al.* (1995) and for ring conformations, see: Cremer & Pople (1975). For background to Rutaceae plants, coumarins and their biological activity, see: Kongkathip *et al.* (2005); Laphookhieo *et al.* (2009); Maneerat *et al.* (2010); Huang *et al.* (1997); Su *et al.* (2009); Tangyue-nyongwatthana *et al.* (1992); Yenjai *et al.* (2000).

‡ Thomson Reuters ResearcherID: A-3561-2009.

§ Additional correspondence author, e-mail: suchada.c@psu.ac.th. Thomson Reuters ResearcherID: A-5085-2009.



Experimental

Crystal data

$\text{C}_{19}\text{H}_{20}\text{O}_5$ $V = 1602.06$ (6) Å³
 $M_r = 328.35$ $Z = 4$
 Monoclinic, $P2_1/c$ $\text{Cu K}\alpha$ radiation
 $a = 10.2239$ (2) Å $\mu = 0.81$ mm⁻¹
 $b = 11.3090$ (3) Å $T = 100$ K
 $c = 13.8764$ (3) Å $0.43 \times 0.43 \times 0.33$ mm
 $\beta = 93.108$ (1)°

Data collection

Bruker APEX DUO CCD area-detector diffractometer 48432 measured reflections
 Absorption correction: multi-scan (SADABS; Bruker, 2009) 3114 independent reflections
 $T_{\min} = 0.721$, $T_{\max} = 0.774$ 3088 reflections with $I > 2\sigma(I)$
 $R_{\text{int}} = 0.027$

Refinement

$R[F^2 > 2\sigma(F^2)] = 0.047$ H atoms treated by a mixture of independent and constrained refinement
 $wR(F^2) = 0.147$ $\Delta\rho_{\text{max}} = 0.71$ e Å⁻³
 $S = 1.29$ $\Delta\rho_{\text{min}} = -0.84$ e Å⁻³
 3114 reflections
 234 parameters

Table 1

Hydrogen-bond geometry (Å, °).

Cg1 is the centroid of the $\text{C1}-\text{C5}/\text{O1}$ ring.

| $D-\text{H}\cdots A$ | $D-\text{H}$ | $\text{H}\cdots A$ | $D\cdots A$ | $D-\text{H}\cdots A$ |
|---|--------------|--------------------|-------------|----------------------|
| $\text{O5}-\text{H1O5}\cdots\text{O4}$ | 0.93 (2) | 1.66 (2) | 2.5361 (14) | 155 (2) |
| $\text{C9}-\text{H9B}\cdots\text{O3}^{\text{ii}}$ | 0.97 | 2.36 | 3.2621 (17) | 155 |
| $\text{C16}-\text{H16B}\cdots\text{O5}^{\text{ii}}$ | 0.96 | 2.59 | 3.4982 (17) | 159 |
| $\text{C16}-\text{H16C}\cdots\text{O2}$ | 0.96 | 2.34 | 2.9441 (16) | 121 |
| $\text{C15}-\text{H15B}\cdots\text{Cg1}^{\text{iii}}$ | 0.97 (2) | 2.83 (2) | 3.5908 (16) | 136.7 (15) |

Symmetry codes: (i) $x, y - 1, z$; (ii) $-x, -y + 2, -z + 2$; (iii) $-x + 1, -y + 2, -z + 2$.

Data collection: APEX2 (Bruker, 2009); cell refinement: SAINT (Bruker, 2009); data reduction: SAINT; program(s) used to solve structure: SHELXTL (Sheldrick, 2008); program(s) used to refine structure: SHELXTL; molecular graphics: SHELXTL; software used to prepare material for publication: SHELXTL and PLATON (Spek, 2009).

SL and TS are grateful to the Thailand Research Fund through the Royal Golden Jubilee PhD Program and Mae Fah Luang University for financial support. SC thanks the Prince of Songkla University for generous support through the Crystal Materials Research Unit. The authors also thank Universiti Sains Malaysia for the Research University Grant No. 1001/PFIZIK/811160.

Supplementary data and figures for this paper are available from the IUCr electronic archives (Reference: BQ2271).

References

- Allen, F. H., Kennard, O., Watson, D. G., Brammer, L., Orpen, A. G. & Taylor, R. (1987). *J. Chem. Soc. Perkin Trans. 2*, pp. S1–19.
- Bernstein, J., Davis, R. E., Shimoni, L. & Chang, N.-L. (1995). *Angew. Chem. Int. Ed. Engl.* **34**, 1555–1573.
- Bruker (2009). *APEX2, SAINT and SADABS*. Bruker AXS Inc., Madison, Wisconsin, USA.
- Cremer, D. & Pople, J. A. (1975). *J. Am. Chem. Soc.* **97**, 1354–1358.
- Huang, S.-C., Wu, P.-L. & Wu, T.-S. (1997). *Phytochemistry*, **44**, 179–181.
- Kongkathip, B., Kongkathip, N., Sunthitikawinsakul, A., Napaswat, C. & Yoosook, C. (2005). *Phytother. Res.* **19**, 728–731.
- Laphookhieo, S., Sripisut, T., Prawat, U. & Karalai, C. (2009). *Heterocycles*, **78**, 2115–2119.
- Maneerat, W., Prawat, U., Saewan, N. & Laphookhieo, S. (2010). *J. Braz. Chem. Soc.* **21**, 665–668.
- Sheldrick, G. M. (2008). *Acta Cryst.* **A64**, 112–122.
- Spek, A. L. (2009). *Acta Cryst.* **D65**, 148–155.
- Su, C.-R., Yeh, S.-F., Liu, C.-M., Damu, A.-G., Kuo, T.-H., Chaing, P.-C., Bastow, K. F., Lee, K.-H. & Wu, T.-S. (2009). *Bioorg. Med. Chem.* **17**, 6137–6143.
- Tangyuenyongwatthana, P., Pummangura, S. & Thanyavuthi, D. (1992). *Songklanakarinn J. Sci. Technol.* **14**, 157–162.
- Yenjai, C., Sripontan, S., Sriprajun, P., Kittakooop, P., Jintasirikul, A., Tanticharoen, M. & Thebtaranonth, Y. (2000). *Planta Med.* **66**, 277–279.

supplementary materials

Acta Cryst. (2011). E67, o422-o423 [doi:10.1107/S1600536811001565]

5-Hydroxy-8,8-dimethyl-10-(2-methylbut-3-en-2-yl)-2*H*,6*H*-7,8-dihydropyrano[3,2-*g*]chromene-2,6-dione

H.-K. Fun, T. Sripisut, S. Laphookhieo and S. Chantrapromma

Comment

Rutaceae plants are the rich sources of coumarins and carbazole alkaloids. Many of them have been isolated from several genera of Rutaceae especially from *Clausena* genus (Laphookhieo *et al.*, 2009; Maneerat *et al.*, 2010; Tangyuenyongwathana *et al.*, 1992) and some of these compounds show interesting pharmacological activities (Yenjai *et al.*, 2000). During our on-going research on bioactive natural products from Thai medicinal plants, the title pyranocoumarin which known as clausenidin (Huang *et al.*, 1997) was isolated from the roots of *C. excavata* which were collected from Suratthani province in the southern part of Thailand. Previous reports have found that clausenidin displayed anti-HIV-1 activity in a syncytial assay (Kongkathip *et al.*, 2005) and cytotoxicity against four human cancer cell lines (A549, MCF7, KB and KB-VIN) (Su *et al.*, 2009). We report herein the crystal structure of the title pyranocoumarin (I).

Fig. 1 shows that in the structure of (I), the pyran ring (C7–C11/O2) adopts an envelope conformation with the puckering atom C10 having deviation of 0.3279 (15) Å, and puckering parameters $Q = 0.4648$ (14) Å, $\theta = 123.32$ (17)° and $\varphi = 204.32$ ° (Cremer & Pople, 1975). The benzene and dihydro-pyran ring system (C1–C7/C11–C12/O1) is planar with the *r.m.s.* 0.0190 (1) Å. The hydroxy group are planarly attached to the benzene ring. The orientation of the 2-methyl-but-3-enyl [C13–C17] side chain with respect to the benzene ring is indicated by the torsion angle of C12–C13–C14–C15 = 138.93 (16)°, indicating a (+)-anticlinal conformation (Fig. 1). Intramolecular O5—H1O5...O4 hydrogen bond (Table 1) generates an S(6) ring motif (Fig. 1 and Table 1) (Bernstein *et al.*, 1995). The bond distances in (I) are within normal ranges (Allen *et al.*, 1987).

The crystal packing of (I) is stabilized by intermolecular C—H...O and C—H... π weak interactions (Table 1). The molecules are linked into chains along the *b* axis and these chains are stacked along the *a* axis (Fig. 2 and Table 1). π – π interactions with the Cg₁...Cg₂ distance = 3.7698 (7) Å (symmetry code: -*x*, 2-*y*, 2-*z*) are observed; Cg₁ and Cg₂ are the centroids of C1–C5/O1 and C1/C5–C7/C11–C12 rings, respectively.

Experimental

The roots of *C. excavata* (3.98 Kg) were successively extracted with CH₂Cl₂ over the period of 3 days at room temperature to provide the crude CH₂Cl₂ extract which was subjected to quick column chromatography (QCC) over silica gel eluted with a gradient of hexane–EtOAc (100% hexane to 100% EtOAc) to provide twenty-one fractions (A–U). Fraction G (10.68 g) was further separated by QCC with a gradient of 10% EtOAc–hexane to 100% EtOAc to give seven subfractions (G1–G7). Subfraction G4 (1.82 g) was subjected to repeated column chromatography using 6% EtOAc–hexane to yield the yellow solid of the title compound (30.0 mg). Yellow block-shaped single crystals of the title compound suitable for *x*-ray structure determination were recrystallized from CH₂Cl₂/CH₃OH (4:1 v/v) by the slow evaporation of the solvent at room temperature after several days, Mp. 410–411 K (decomposition).

Refinement

Hydrogen atoms attached to C15 and hydroxyl H atom were located from the difference map and refined isotropically. The remaining H atoms were placed in calculated positions with (C—H) = 0.93 for aromatic and CH, 0.97 for CH₂ and 0.96 Å for CH₃ atoms. The U_{iso} values were constrained to be $1.5U_{\text{eq}}$ of the carrier atom for methyl H atoms and $1.2U_{\text{eq}}$ for the remaining H atoms. A rotating group model was used for the methyl groups. The highest residual electron density peak is located at 1.51 Å from H16C and the deepest hole is located at 1.43 Å from C11.

Figures

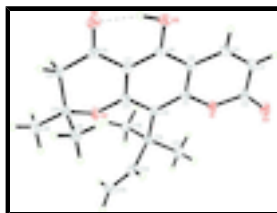


Fig. 1. The structure of (I), showing 50% probability displacement ellipsoids and the atom-numbering scheme. O—H...O hydrogen bond is shown as dashed line.

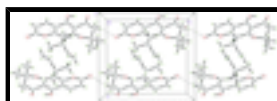


Fig. 2. The crystal packing of (I) viewed along the *c* axis, showing chains along the *b* axis. Hydrogen bonds are shown as dashed lines.

5-Hydroxy-8,8-dimethyl-10-(2-methylbut-3-en-2-yl)-2*H*,6*H*-7,8-dihydropyrano[3,2-*g*]chromene-2,6-dione

Crystal data

| | |
|--|---|
| $\text{C}_{19}\text{H}_{20}\text{O}_5$ | $F(000) = 696$ |
| $M_r = 328.35$ | $D_x = 1.361 \text{ Mg m}^{-3}$ |
| Monoclinic, $P2_1/c$ | Melting point = 410–411 K |
| Hall symbol: -P 2ybc | Cu $K\alpha$ radiation, $\lambda = 1.54178 \text{ \AA}$ |
| $a = 10.2239 (2) \text{ \AA}$ | Cell parameters from 3114 reflections |
| $b = 11.3090 (3) \text{ \AA}$ | $\theta = 5.8\text{--}72.0^\circ$ |
| $c = 13.8764 (3) \text{ \AA}$ | $\mu = 0.81 \text{ mm}^{-1}$ |
| $\beta = 93.108 (1)^\circ$ | $T = 100 \text{ K}$ |
| $V = 1602.06 (6) \text{ \AA}^3$ | Block, yellow |
| $Z = 4$ | $0.43 \times 0.43 \times 0.33 \text{ mm}$ |

Data collection

| | |
|---|--|
| Bruker APEX DUO CCD area-detector diffractometer | 3114 independent reflections |
| Radiation source: sealed tube graphite | 3088 reflections with $I > 2\sigma(I)$ |
| φ and ω scans | $R_{\text{int}} = 0.027$ |
| Absorption correction: multi-scan (<i>SADABS</i> ; Bruker, 2009) | $\theta_{\text{max}} = 72.0^\circ$, $\theta_{\text{min}} = 5.8^\circ$ |
| $T_{\text{min}} = 0.721$, $T_{\text{max}} = 0.774$ | $h = -12 \rightarrow 12$ |
| | $k = -12 \rightarrow 13$ |

48432 measured reflections

$l = -16 \rightarrow 16$

Refinement

Refinement on F^2

Secondary atom site location: difference Fourier map

Least-squares matrix: full

Hydrogen site location: inferred from neighbouring sites

$R[F^2 > 2\sigma(F^2)] = 0.047$

H atoms treated by a mixture of independent and constrained refinement

$wR(F^2) = 0.147$

$w = 1/[\sigma^2(F_o^2) + (0.085P)^2 + 0.4129P]$

where $P = (F_o^2 + 2F_c^2)/3$

$S = 1.29$

$(\Delta/\sigma)_{\max} = 0.001$

3114 reflections

$\Delta\rho_{\max} = 0.71 \text{ e } \text{\AA}^{-3}$

234 parameters

$\Delta\rho_{\min} = -0.84 \text{ e } \text{\AA}^{-3}$

0 restraints

Extinction correction: *SHELXTL* (Sheldrick, 2008),

$F_c^* = kFc[1+0.001xFc^2\lambda^3/\sin(2\theta)]^{-1/4}$

Primary atom site location: structure-invariant direct methods

Extinction coefficient: 0.041 (2)

Special details

Experimental. The crystal was placed in the cold stream of an Oxford Cryosystems Cobra open-flow nitrogen cryostat (Cosier & Glazer, 1986) operating at 100.0 (1) K.

Geometry. All esds (except the esd in the dihedral angle between two l.s. planes) are estimated using the full covariance matrix. The cell esds are taken into account individually in the estimation of esds in distances, angles and torsion angles; correlations between esds in cell parameters are only used when they are defined by crystal symmetry. An approximate (isotropic) treatment of cell esds is used for estimating esds involving l.s. planes.

Refinement. Refinement of F^2 against ALL reflections. The weighted R-factor wR and goodness of fit S are based on F^2 , conventional R-factors R are based on F , with F set to zero for negative F^2 . The threshold expression of $F^2 > 2\sigma(F^2)$ is used only for calculating R-factors(gt) etc. and is not relevant to the choice of reflections for refinement. R-factors based on F^2 are statistically about twice as large as those based on F , and R- factors based on ALL data will be even larger.

Fractional atomic coordinates and isotropic or equivalent isotropic displacement parameters (\AA^2)

| | <i>x</i> | <i>y</i> | <i>z</i> | $U_{\text{iso}}^*/U_{\text{eq}}$ |
|------|--------------|--------------|--------------|----------------------------------|
| O1 | 0.24205 (9) | 1.16069 (8) | 0.99936 (7) | 0.0182 (3) |
| O2 | 0.25452 (9) | 0.76187 (8) | 0.90044 (6) | 0.0178 (3) |
| O3 | 0.25906 (11) | 1.34713 (9) | 1.04469 (8) | 0.0251 (3) |
| O4 | 0.01977 (10) | 0.66004 (9) | 1.11316 (7) | 0.0228 (3) |
| O5 | 0.01904 (10) | 0.87092 (9) | 1.17530 (7) | 0.0216 (3) |
| H1O5 | 0.010 (2) | 0.789 (2) | 1.1695 (16) | 0.046 (6)* |
| C1 | 0.20676 (12) | 1.04507 (12) | 1.01109 (9) | 0.0155 (3) |
| C2 | 0.21353 (13) | 1.25150 (12) | 1.06206 (10) | 0.0188 (3) |
| C3 | 0.13341 (13) | 1.22145 (13) | 1.14119 (10) | 0.0201 (3) |
| H3A | 0.1083 | 1.2802 | 1.1833 | 0.024* |
| C4 | 0.09493 (13) | 1.10932 (12) | 1.15431 (10) | 0.0186 (3) |
| H4A | 0.0440 | 1.0912 | 1.2059 | 0.022* |

supplementary materials

| | | | | |
|------|--------------|--------------|--------------|------------|
| C5 | 0.13116 (12) | 1.01699 (12) | 1.09000 (9) | 0.0164 (3) |
| C6 | 0.09425 (12) | 0.89887 (12) | 1.10224 (9) | 0.0165 (3) |
| C7 | 0.13559 (12) | 0.81207 (12) | 1.03860 (9) | 0.0162 (3) |
| C8 | 0.09306 (12) | 0.69006 (12) | 1.04907 (10) | 0.0180 (3) |
| C9 | 0.13851 (13) | 0.60284 (12) | 0.97689 (10) | 0.0194 (3) |
| H9A | 0.0724 | 0.5956 | 0.9244 | 0.023* |
| H9B | 0.1490 | 0.5260 | 1.0074 | 0.023* |
| C10 | 0.26803 (14) | 0.63988 (11) | 0.93635 (10) | 0.0183 (3) |
| C11 | 0.21402 (12) | 0.84528 (12) | 0.96178 (9) | 0.0154 (3) |
| C12 | 0.25049 (12) | 0.96284 (12) | 0.94385 (9) | 0.0154 (3) |
| C13 | 0.33249 (13) | 0.98950 (12) | 0.85555 (9) | 0.0176 (3) |
| C14 | 0.45881 (13) | 0.91792 (13) | 0.86498 (10) | 0.0211 (3) |
| H14A | 0.5002 | 0.9134 | 0.9262 | 0.025* |
| C15 | 0.51505 (15) | 0.86207 (14) | 0.79547 (11) | 0.0258 (4) |
| H15A | 0.473 (2) | 0.8581 (18) | 0.7301 (16) | 0.038 (5)* |
| H15B | 0.598 (2) | 0.8228 (18) | 0.8085 (14) | 0.034 (5)* |
| C16 | 0.24997 (13) | 0.95973 (13) | 0.76241 (9) | 0.0204 (3) |
| H16A | 0.2977 | 0.9812 | 0.7073 | 0.031* |
| H16B | 0.1691 | 1.0029 | 0.7614 | 0.031* |
| H16C | 0.2318 | 0.8765 | 0.7605 | 0.031* |
| C17 | 0.37739 (16) | 1.11907 (13) | 0.84519 (11) | 0.0273 (4) |
| H17A | 0.4288 | 1.1263 | 0.7896 | 0.041* |
| H17B | 0.4293 | 1.1419 | 0.9019 | 0.041* |
| H17C | 0.3020 | 1.1695 | 0.8377 | 0.041* |
| C18 | 0.29707 (16) | 0.56754 (13) | 0.84802 (11) | 0.0252 (3) |
| H18A | 0.3768 | 0.5951 | 0.8222 | 0.038* |
| H18B | 0.2263 | 0.5759 | 0.8001 | 0.038* |
| H18C | 0.3065 | 0.4858 | 0.8658 | 0.038* |
| C19 | 0.38167 (14) | 0.63524 (12) | 1.01187 (10) | 0.0213 (3) |
| H19A | 0.4603 | 0.6615 | 0.9837 | 0.032* |
| H19B | 0.3932 | 0.5555 | 1.0345 | 0.032* |
| H19C | 0.3631 | 0.6857 | 1.0650 | 0.032* |

Atomic displacement parameters (\AA^2)

| | U^{11} | U^{22} | U^{33} | U^{12} | U^{13} | U^{23} |
|----|------------|------------|------------|-------------|-------------|-------------|
| O1 | 0.0233 (5) | 0.0130 (5) | 0.0188 (5) | -0.0003 (4) | 0.0045 (4) | -0.0003 (3) |
| O2 | 0.0241 (5) | 0.0126 (5) | 0.0169 (5) | 0.0009 (4) | 0.0044 (4) | -0.0005 (3) |
| O3 | 0.0334 (6) | 0.0144 (5) | 0.0278 (6) | -0.0006 (4) | 0.0039 (4) | -0.0006 (4) |
| O4 | 0.0219 (5) | 0.0208 (5) | 0.0261 (5) | -0.0027 (4) | 0.0059 (4) | 0.0046 (4) |
| O5 | 0.0235 (5) | 0.0213 (6) | 0.0208 (5) | -0.0009 (4) | 0.0088 (4) | 0.0018 (4) |
| C1 | 0.0153 (6) | 0.0140 (6) | 0.0171 (6) | 0.0002 (5) | -0.0007 (5) | 0.0011 (5) |
| C2 | 0.0205 (7) | 0.0156 (7) | 0.0201 (7) | 0.0024 (5) | -0.0015 (5) | -0.0020 (5) |
| C3 | 0.0209 (7) | 0.0203 (7) | 0.0191 (7) | 0.0042 (5) | 0.0011 (5) | -0.0048 (5) |
| C4 | 0.0165 (6) | 0.0225 (7) | 0.0168 (6) | 0.0024 (5) | 0.0018 (5) | -0.0015 (5) |
| C5 | 0.0156 (6) | 0.0183 (7) | 0.0153 (6) | 0.0013 (5) | 0.0010 (5) | 0.0002 (5) |
| C6 | 0.0139 (6) | 0.0210 (7) | 0.0147 (6) | 0.0006 (5) | 0.0012 (5) | 0.0019 (5) |
| C7 | 0.0154 (6) | 0.0164 (7) | 0.0166 (6) | 0.0001 (5) | 0.0002 (5) | 0.0019 (5) |

| | | | | | | |
|-----|------------|------------|------------|-------------|-------------|-------------|
| C8 | 0.0150 (6) | 0.0183 (7) | 0.0204 (7) | 0.0003 (5) | -0.0015 (5) | 0.0033 (5) |
| C9 | 0.0200 (7) | 0.0138 (6) | 0.0242 (7) | -0.0017 (5) | 0.0011 (5) | 0.0014 (5) |
| C10 | 0.0227 (7) | 0.0120 (6) | 0.0206 (7) | 0.0008 (5) | 0.0028 (5) | 0.0009 (5) |
| C11 | 0.0152 (6) | 0.0161 (7) | 0.0148 (6) | 0.0014 (5) | -0.0004 (5) | -0.0009 (5) |
| C12 | 0.0159 (6) | 0.0157 (7) | 0.0147 (6) | 0.0003 (5) | 0.0013 (5) | 0.0007 (5) |
| C13 | 0.0203 (7) | 0.0170 (7) | 0.0160 (6) | 0.0000 (5) | 0.0052 (5) | -0.0003 (5) |
| C14 | 0.0180 (7) | 0.0267 (7) | 0.0187 (7) | -0.0006 (5) | 0.0011 (5) | 0.0007 (5) |
| C15 | 0.0217 (7) | 0.0305 (8) | 0.0250 (8) | 0.0060 (6) | 0.0003 (6) | -0.0025 (6) |
| C16 | 0.0217 (7) | 0.0233 (7) | 0.0165 (7) | 0.0032 (5) | 0.0030 (5) | 0.0028 (5) |
| C17 | 0.0376 (9) | 0.0201 (7) | 0.0257 (7) | -0.0052 (6) | 0.0160 (6) | -0.0010 (6) |
| C18 | 0.0338 (8) | 0.0174 (7) | 0.0248 (7) | 0.0017 (6) | 0.0048 (6) | -0.0037 (5) |
| C19 | 0.0204 (7) | 0.0199 (7) | 0.0237 (7) | 0.0020 (5) | 0.0028 (5) | 0.0017 (5) |

Geometric parameters (Å, °)

| | | | |
|------------|-------------|-------------|-------------|
| O1—C1 | 1.3685 (16) | C10—C18 | 1.5164 (19) |
| O1—C2 | 1.3872 (16) | C10—C19 | 1.5227 (19) |
| O2—C11 | 1.3505 (16) | C11—C12 | 1.4065 (19) |
| O2—C10 | 1.4708 (15) | C12—C13 | 1.5513 (17) |
| O3—C2 | 1.2069 (18) | C13—C14 | 1.5238 (19) |
| O4—C8 | 1.2410 (17) | C13—C16 | 1.5419 (18) |
| O5—C6 | 1.3430 (16) | C13—C17 | 1.5445 (18) |
| O5—H1O5 | 0.93 (2) | C14—C15 | 1.311 (2) |
| C1—C12 | 1.4073 (19) | C14—H14A | 0.9300 |
| C1—C5 | 1.4103 (18) | C15—H15A | 0.98 (2) |
| C2—C3 | 1.4456 (19) | C15—H15B | 0.97 (2) |
| C3—C4 | 1.343 (2) | C16—H16A | 0.9600 |
| C3—H3A | 0.9300 | C16—H16B | 0.9600 |
| C4—C5 | 1.4352 (18) | C16—H16C | 0.9600 |
| C4—H4A | 0.9300 | C17—H17A | 0.9600 |
| C5—C6 | 1.4009 (19) | C17—H17B | 0.9600 |
| C6—C7 | 1.4009 (19) | C17—H17C | 0.9600 |
| C7—C11 | 1.4189 (18) | C18—H18A | 0.9600 |
| C7—C8 | 1.4564 (18) | C18—H18B | 0.9600 |
| C8—C9 | 1.4975 (19) | C18—H18C | 0.9600 |
| C9—C10 | 1.5253 (19) | C19—H19A | 0.9600 |
| C9—H9A | 0.9700 | C19—H19B | 0.9600 |
| C9—H9B | 0.9700 | C19—H19C | 0.9600 |
| C1—O1—C2 | 124.55 (11) | C12—C11—C7 | 123.30 (12) |
| C11—O2—C10 | 117.90 (10) | C11—C12—C1 | 114.24 (12) |
| C6—O5—H1O5 | 103.0 (14) | C11—C12—C13 | 118.90 (11) |
| O1—C1—C12 | 117.21 (12) | C1—C12—C13 | 126.86 (12) |
| O1—C1—C5 | 117.81 (12) | C14—C13—C16 | 112.25 (11) |
| C12—C1—C5 | 124.97 (13) | C14—C13—C17 | 104.91 (11) |
| O3—C2—O1 | 116.21 (12) | C16—C13—C17 | 106.32 (11) |
| O3—C2—C3 | 127.09 (13) | C14—C13—C12 | 108.70 (11) |
| O1—C2—C3 | 116.70 (12) | C16—C13—C12 | 108.97 (11) |
| C4—C3—C2 | 120.48 (12) | C17—C13—C12 | 115.72 (11) |
| C4—C3—H3A | 119.8 | C15—C14—C13 | 126.59 (13) |

supplementary materials

| | | | |
|--------------|--------------|----------------|--------------|
| C2—C3—H3A | 119.8 | C15—C14—H14A | 116.7 |
| C3—C4—C5 | 121.02 (13) | C13—C14—H14A | 116.7 |
| C3—C4—H4A | 119.5 | C14—C15—H15A | 120.7 (12) |
| C5—C4—H4A | 119.5 | C14—C15—H15B | 120.0 (12) |
| C6—C5—C1 | 118.12 (12) | H15A—C15—H15B | 119.3 (17) |
| C6—C5—C4 | 122.55 (12) | C13—C16—H16A | 109.5 |
| C1—C5—C4 | 119.32 (12) | C13—C16—H16B | 109.5 |
| O5—C6—C7 | 121.03 (12) | H16A—C16—H16B | 109.5 |
| O5—C6—C5 | 119.01 (12) | C13—C16—H16C | 109.5 |
| C7—C6—C5 | 119.95 (12) | H16A—C16—H16C | 109.5 |
| C6—C7—C11 | 119.36 (12) | H16B—C16—H16C | 109.5 |
| C6—C7—C8 | 119.95 (12) | C13—C17—H17A | 109.5 |
| C11—C7—C8 | 120.64 (12) | C13—C17—H17B | 109.5 |
| O4—C8—C7 | 121.72 (13) | H17A—C17—H17B | 109.5 |
| O4—C8—C9 | 121.36 (12) | C13—C17—H17C | 109.5 |
| C7—C8—C9 | 116.89 (12) | H17A—C17—H17C | 109.5 |
| C8—C9—C10 | 111.89 (11) | H17B—C17—H17C | 109.5 |
| C8—C9—H9A | 109.2 | C10—C18—H18A | 109.5 |
| C10—C9—H9A | 109.2 | C10—C18—H18B | 109.5 |
| C8—C9—H9B | 109.2 | H18A—C18—H18B | 109.5 |
| C10—C9—H9B | 109.2 | C10—C18—H18C | 109.5 |
| H9A—C9—H9B | 107.9 | H18A—C18—H18C | 109.5 |
| O2—C10—C18 | 104.54 (11) | H18B—C18—H18C | 109.5 |
| O2—C10—C19 | 108.64 (11) | C10—C19—H19A | 109.5 |
| C18—C10—C19 | 111.23 (12) | C10—C19—H19B | 109.5 |
| O2—C10—C9 | 108.37 (11) | H19A—C19—H19B | 109.5 |
| C18—C10—C9 | 111.21 (12) | C10—C19—H19C | 109.5 |
| C19—C10—C9 | 112.46 (11) | H19A—C19—H19C | 109.5 |
| O2—C11—C12 | 117.10 (12) | H19B—C19—H19C | 109.5 |
| O2—C11—C7 | 119.58 (12) | | |
| C2—O1—C1—C12 | -176.20 (11) | C11—O2—C10—C19 | -68.22 (14) |
| C2—O1—C1—C5 | 2.95 (18) | C11—O2—C10—C9 | 54.25 (14) |
| C1—O1—C2—O3 | 175.33 (12) | C8—C9—C10—O2 | -52.54 (14) |
| C1—O1—C2—C3 | -4.33 (18) | C8—C9—C10—C18 | -166.91 (11) |
| O3—C2—C3—C4 | -176.61 (14) | C8—C9—C10—C19 | 67.58 (14) |
| O1—C2—C3—C4 | 3.01 (19) | C10—O2—C11—C12 | 154.89 (11) |
| C2—C3—C4—C5 | -0.5 (2) | C10—O2—C11—C7 | -26.57 (16) |
| O1—C1—C5—C6 | 179.76 (11) | C6—C7—C11—O2 | 179.76 (11) |
| C12—C1—C5—C6 | -1.2 (2) | C8—C7—C11—O2 | -3.05 (18) |
| O1—C1—C5—C4 | -0.19 (18) | C6—C7—C11—C12 | -1.79 (19) |
| C12—C1—C5—C4 | 178.89 (12) | C8—C7—C11—C12 | 175.40 (11) |
| C3—C4—C5—C6 | 179.13 (12) | O2—C11—C12—C1 | -179.17 (10) |
| C3—C4—C5—C1 | -0.9 (2) | C7—C11—C12—C1 | 2.35 (19) |
| C1—C5—C6—O5 | -178.07 (11) | O2—C11—C12—C13 | 0.61 (17) |
| C4—C5—C6—O5 | 1.87 (19) | C7—C11—C12—C13 | -177.87 (11) |
| C1—C5—C6—C7 | 1.80 (19) | O1—C1—C12—C11 | 178.22 (10) |
| C4—C5—C6—C7 | -178.26 (11) | C5—C1—C12—C11 | -0.87 (19) |
| O5—C6—C7—C11 | 179.45 (11) | O1—C1—C12—C13 | -1.54 (19) |
| C5—C6—C7—C11 | -0.42 (19) | C5—C1—C12—C13 | 179.37 (12) |

| | | | |
|----------------|--------------|-----------------|--------------|
| O5—C6—C7—C8 | 2.24 (19) | C11—C12—C13—C14 | -57.89 (15) |
| C5—C6—C7—C8 | -177.63 (11) | C1—C12—C13—C14 | 121.86 (14) |
| C6—C7—C8—O4 | 0.37 (19) | C11—C12—C13—C16 | 64.73 (15) |
| C11—C7—C8—O4 | -176.81 (12) | C1—C12—C13—C16 | -115.52 (14) |
| C6—C7—C8—C9 | 178.52 (11) | C11—C12—C13—C17 | -175.57 (12) |
| C11—C7—C8—C9 | 1.35 (18) | C1—C12—C13—C17 | 4.2 (2) |
| O4—C8—C9—C10 | -154.56 (12) | C16—C13—C14—C15 | 18.3 (2) |
| C7—C8—C9—C10 | 27.28 (16) | C17—C13—C14—C15 | -96.71 (17) |
| C11—O2—C10—C18 | 172.93 (11) | C12—C13—C14—C15 | 138.93 (16) |

Hydrogen-bond geometry (Å, °)

Cg1 is the centroid of the C1—C5/O1 ring.

| <i>D</i> —H... <i>A</i> | <i>D</i> —H | H... <i>A</i> | <i>D</i> ... <i>A</i> | <i>D</i> —H... <i>A</i> |
|-------------------------------|-------------|---------------|-----------------------|-------------------------|
| O5—H1O5...O4 | 0.93 (2) | 1.66 (2) | 2.5361 (14) | 155 (2) |
| C9—H9B...O3 ⁱ | 0.97 | 2.36 | 3.2621 (17) | 155 |
| C16—H16B...O5 ⁱⁱ | 0.96 | 2.59 | 3.4982 (17) | 159 |
| C16—H16C...O2 | 0.96 | 2.34 | 2.9441 (16) | 121 |
| C15—H15B...Cg1 ⁱⁱⁱ | 0.97 (2) | 2.83 (2) | 3.5908 (16) | 136.7 (15) |

Symmetry codes: (i) $x, y-1, z$; (ii) $-x, -y+2, -z+2$; (iii) $-x+1, -y+2, -z+2$.

Fig. 1

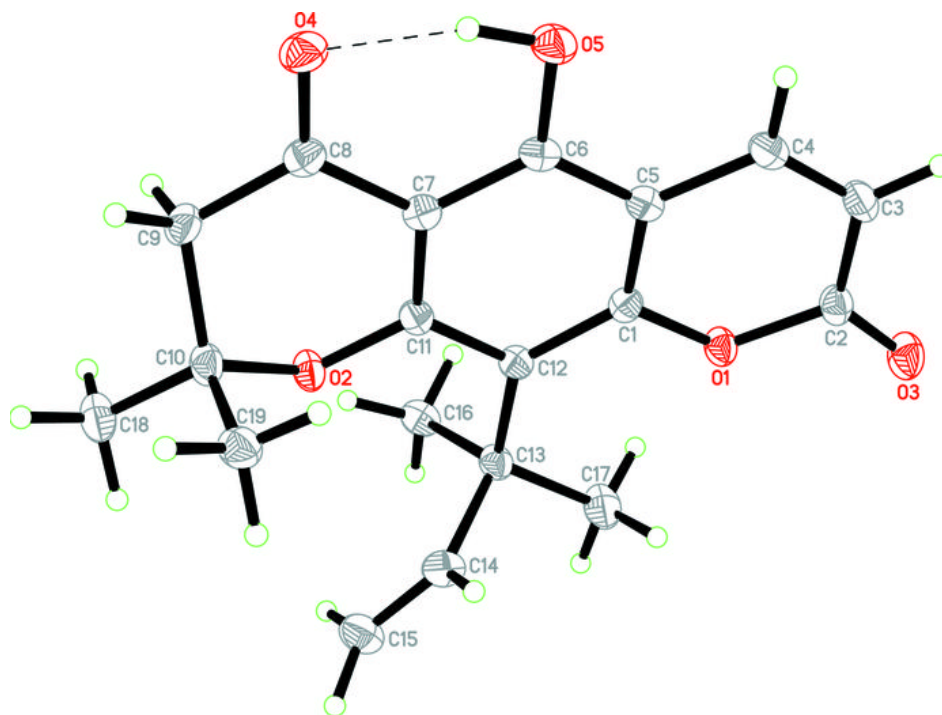


Fig. 2

